



SYSTEMAINABILITY ASIA

www.systemainabilityasia.com

SYSTAINABILITY ASIA

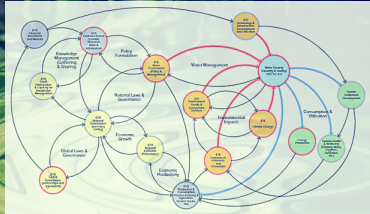
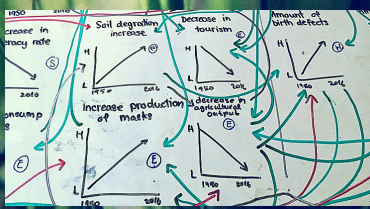


ABOUT US

Founded in 2005, Sustainability Asia is a multidisciplinary Thailand-based consulting and training organisation that works throughout the Asia and Pacific with the regions' development stakeholders to advance sustainability thinking, action and transformation.

Our strength is in our our breath of knowledge and experience in the region on nearly all aspects of sustainable development, as well as our collaborative learning approach augmented by innovative proven tools & methods for building capacity and facilitating collaborative agreement and action.

ACCELERATING WHOLE SYSTEM CHANGE TOWARD SUSTAINABILITY



SYSTEM THINKING

We take a 'systems approach' to everything we do. Systems thinking lies at the core of our worldview, as well as our overall approach.

We incorporate systems thinking and systems dynamics tools and methods with every client and group that we work with.

OUR APPROACH

COLLABORATION AND NETWORKING

Sustainability Asia is long-term Affiliate of AtKisson Group International, a global network of highly skilled sustainability professionals working on every continent in over 40 countries.

Our ability to draw on a deep well of global experts in different sustainability related fields is one of the things that sets us apart.

ORGANISATIONAL LEARNING

We adhere and support the philosophy of learning organisations exposed by Peter Senge and the Society for Organisational Learning. We continually seek to create an environment and culture that encourages and supports continuous learning and mastery amongst all of our team, as well as with our clients and partners.

We encourage critical thinking, calculated risk taking, creativity and innovation in seeking the best solution and way forward, and value contributions from all sectors and perspectives.

WWW.SYSTAINABILITYASIA.COM

INFO@SYSTAINABILITYASIA.COM

0(66) 81 920 2215 / 0(66) 81 259 3340



OUR SERVICES

CONSULTING

- Sustainability Integration into National Policy and Planning
- Corporate / Organisation Sustainability Systems Development, Assessment & Strategic Planning
- Sustainability Report Development
- Education for Sustainable Development, Climate Change Education

TRAINING

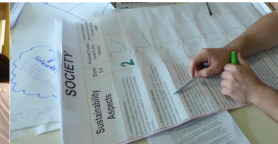
- Sustainable Development & Transformation
- Systems Thinking, Innovation and Social Change
- Sustainability Leadership & Change Agency
- Education for Sustainable Development (ESD)
- Climate Change Education
- Energy Efficiency
- Disaster Risk Management
- Outcome Harvesting
- Leadership Team Building

RESEARCH

- Environment and Natural Resources
- Energy Efficiency & Renewable Energy
- Education for Sustainable Development
- Corporate Sustainability

MEETING AND PROCESS FACILITATION

- Stakeholder Engagement & Consultation
- Strategic Planning
- Meeting Facilitation





TOOLS

Sustainability Asia is the leading Asia expert on the use of the AtKisson Accelerator Toolkit, which is designed to facilitate multi-stakeholder engagement and collaborative sustainable development visioning, planning and action. These tools have been used successfully used by companies, communities, NGOs and municipal, regional and international institutions for integrating and accelerating sustainability.

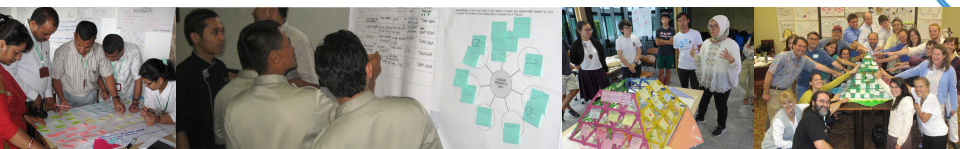
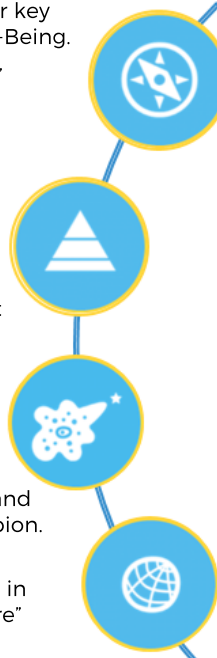
COMPASS translates the complexity of the world into the four key dimensions of sustainability: Nature, Economy, Society, and Well-Being. It is used for sustainability orientation, visioning, systems analysis, indicator development, and sustainability assessment.

VISIS is an open-source methodology for inter-disciplinary collaboration in the context of sustainable development. It is a sequence of steps used in analysis and strategic action planning processes: **Vision > Indicators > Systems > Innovation > Strategy**

PYRAMID is a group process tool focused on sustainability learning, project planning, and developing consensus agreement & action. Pyramid can be used for training on sustainable development or for creating new initiatives and strategies around a central issue or challenge.

AMOEBIA is a tool to facilitate the process of positive social system change. Amoeba especially helps “change agents” to understand their role, develop their skills and change initiative, and become better proponents of the ideas they are trying to champion.

STRATESPHERE is an integrated system for strategic planning in a sustainability context, providing a 360-degree “complete picture” needed for successfully designing any sustainability initiative.



AFFILIATIONS & PARTNERSHIPS



KEY PARTNER AFFILIATES

The AtKisson Group



A global network of highly experienced consultancies, who offers advisory, training, reporting, and related services. Long-standing clients include large companies, governments, and the United Nations.

(www.atkisson.com)

Center for Sustainability Transformation

A Germany based leadership training institute assisting individuals and organisations develop the additional skills and attributes needed to effectively initiate, motivate, and lead sustainability change efforts – and to sustain the process of change itself.

(www.sustainabilitytransformation.com)



Compass Education

A US registered non-profit enterprise based in Thailand that engages schools, educators and youth globally through leadership and professional development training, consulting and Online material resources and networking support.

(www.compasseducation.org)



COMPASS EDUCATION

COLLABORATIVE PARTNERS

CSRWorks (www.csrworks.com) is a Singapore based leading provider of corporate social responsibility services in Asia, with expertise in sustainability reports and GRI, organizational carbon and water footprint accounting, sustainability strategies, development of sustainability standards, social and environmental risk assessment, supply chain audits.



Sasin Center for Sustainability Management (www.sasin.edu) is a collaboration between Sasin Graduate Institute of Business Administration of Chulalongkorn University and the Corporate Responsibility & Ethics Association for Thai Enterprise (CREATE).



WHO WE'VE WORKED WITH

INTERNATIONAL DEVELOPMENT AGENCIES

- UN ESCAP
- UN Environment Regional Office for Asia and Pacific
- UNDP Bangkok
- UNESCO (IBE, Bangkok, Hanoi, Jakarta, Nepal)
- UN DESA
- ASEAN Secretariat
- Asian Development Bank (ADB)
- USAID
- ECO-Asia / AECOM International Development. (AECOM)

NATIONAL & REGIONAL GOVERNMENT INSTITUTIONS

- Singapore National Environmental Agency (NEA)
- Singapore Environment Institute (SEI)
- Thailand Ministry of Natural Resources and Environment (MoNRE)
- Department of Environmental Quality Promotion (DEQP) Thailand
- Indonesia Ministry of National Development Planning (Bappanas)
- Ministry of Environment (Indonesia)
- Ministry of Education and Culture (Indonesia)
- National Development Agency (Mongolia)
- Ministry of Environment & Tourism (Mongolia)

PRIVATE SECTOR COMPANIES & NGOS

- Levis Strauss & Company
- Toyota Japan
- PT ANTAM Tbk Indonesia (mining)
- INCO Mining Tbk (Indonesia)
- Indah Kiat Pulp and Paper (Indonesia)
- Indonesia Power (Power generation)
- Riau Andalan Pulp and Paper (Indonesia)
- Losari Coffee Plantation Resort & Spa (Indonesia)
- Bank Negara Indonesia (BNI)
- ERM (Thailand)
- PTT Thailand
- Active Management Asia (Thailand)
- YTL PowerSeraya PTE. (Singapore)
- Metso Automation Ltd. (Thailand)
- Levis Strauss & Company
- Toyota Japan
- PT ANTAM Tbk Indonesia (mining)
- INCO Mining Tbk (Indonesia)
- Indah Kiat Pulp and Paper (Indonesia)
- Indonesia Power (Power generation)
- Riau Andalan Pulp and Paper (Indonesia)
- Losari Coffee Plantation Resort & Spa (Indonesia)
- Bank Negara Indonesia (BNI)
- ERM (Thailand)
- PTT Thailand

UNIVERSITIES AND RESEARCH INSTITUTES

- Research Institute of Innovative Technology for the Earth (Japan)
- University of New South Wales – Australia / Faculty of the Built Environment
- Tongji University (China) – Institute for Environment and Sustainable Development (IESD)
- Center for Global Sustainability Studies, University of Science Malaysia
- Asian Institute of Technology (AIT), Thailand
- Trisakti University – Center for Entrepreneurship Change and the Third Sector (CECT) Indonesia
- Auburn University Office of Sustainability (USA)
- United Nations University – Institute for Advanced Studies (UNU-IAS)

SYSTAINABILITY ASIA

www.systainabilityasia.com

369/33 MOO 13, PAPHAI, SANSAI,
CHIANG MAI 50210
THAILAND

Tel / Fax : 0(66) 53 040 259
Mobile: 0(66) 81 920 2215

